



# SECOND SCHOOL RESTART TASK FORCE UPDATE

Dr. Kelvin R. Adams, Superintendent

JUNE 9, 2020





# TASK FORCE PURPOSE

- ❑ **TASK FORCE CHARGE:** The purpose of the task force is to develop and present a set of recommendations and considerations that SLPS should implement in order to ensure a smooth start to the school year 2020-2021. The task force is comprised of school leaders, teachers, district leaders, community leaders, and parents who represent SLPS wide range of schools.

\*Task force is co-chaired by **Susan Reid, Carron Johnson, Addie Bond, and Square Watson**

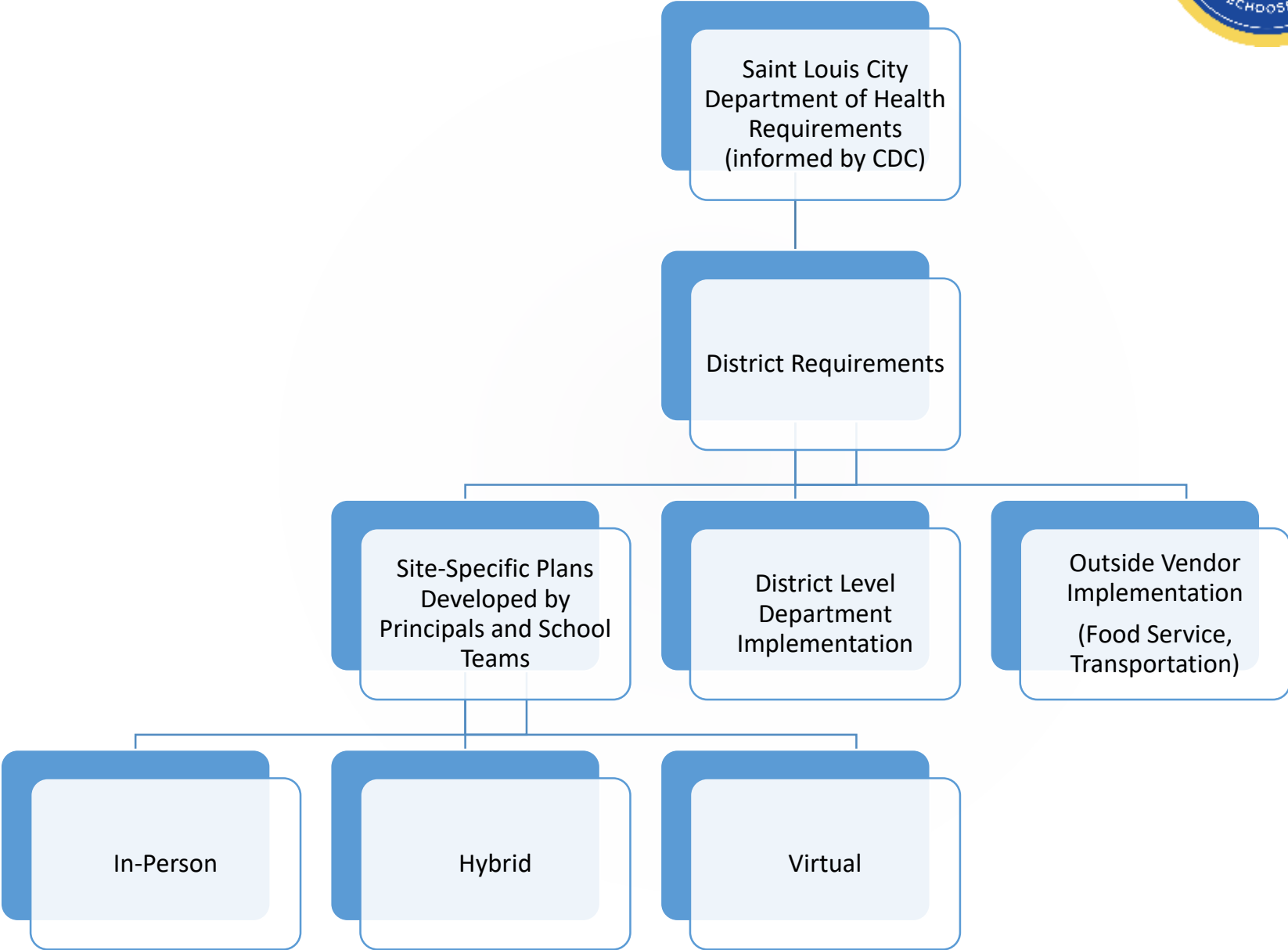
- ❑ The task force includes five subcommittees:
  - ❑ **Governance:** Kelvin Adams
  - ❑ **Wellness:** Michael Brown/Megan Marietta
  - ❑ **Instruction:** Paula Knight
  - ❑ **Facilities/School Operations:** Square Watson
  - ❑ **Technology:** Cheryl VanNoy

# PROGRESS TO DATE



- ❑ Selection of Co-Project Managers to support task force and subcommittees
- Engaging community partners in work of task force and subcommittees
  - ❑ **Urban League- Kesha Chatman**
  - ❑ **Big Brothers Big Sisters – Mackenzie Alberti**
  - ❑ **The Little Bit Foundation – Emily Johnson and John Primmell**
  - ❑ **The Gathering – Beth McClure**
- ❑ Subcommittees formulating recommendations around three possible scenarios:
  - ❑ **In-Person/Brick and Mortar**
  - ❑ **Hybrid**
  - ❑ **Virtual**
- ❑ Staff Personal Protective Equipment
- ❑ Principals
  - ❑ Social distancing blueprints for Brick and Mortar

# RESTART RECOMMENDATIONS



# SAMPLE RECOMMENDATION



Saint Louis City  
Department of  
Health Requirements  
(informed by CDC)

District Requirement:  
All staff must wear  
masks.

Site-Specific Plans  
Developed by  
Principals and School  
Teams

District Level  
Department  
Implementation

Outside Vendor  
Implementation  
(Food Service,  
Transportation)



# SUBCOMMITTEE CONSIDERATIONS

- ❑ **Wellness:**
  - ❑ Supporting Social/Emotional and Health of Students and Staff
  - ❑ Engaging with Partners
- ❑ **Instruction:**
  - ❑ Equity and Access
  - ❑ Blended Learning Model
  - ❑ Configuration
- ❑ **Facilities/School Operations:**
  - ❑ PPE
  - ❑ Cleaning Protocols
  - ❑ Health Screenings
  - ❑ Social Distancing and Building Capacity
- ❑ **Technology:**
  - ❑ Feedback from Virtual Learning
  - ❑ Access to Devices
  - ❑ Professional development
- ❑ **Governance:**
  - ❑ Policy

# SCHOOL BASED PLANNING CONSIDERATIONS



- ❑ **Implementing Social Distancing:**
  - ❑ Building Capacity and Usage
  - ❑ Configuration of Instructional Spaces
  - ❑ Adapting School Procedures
- ❑ **Facility:**
  - ❑ Cleanliness
  - ❑ Visitor Access
- ❑ **Staff:**
  - ❑ Schedules
  - ❑ Professional Development and Support
- ❑ **Instruction:**
  - ❑ Building Schedules
  - ❑ Use of Staff
- ❑ **Wellness**
  - ❑ Health and Well-being
  - ❑ Socio-emotional supports



# NEXT STEPS

## ❑ **Subcommittee Recommendations**

- ❑ Deliberating over possible action steps and feasibility of implementation
- ❑ Connected to action steps and timeline
- ❑ Third week of June 2020

## ❑ **Development of Site-Based Plans**

- ❑ Template to guide planning shared with schools by second week of June

## ❑ **Final Recommendations**

- ❑ Aligned to guidance from Health Department and current situation
- ❑ Presented to Board of Education second week of July

\*Timeline may change pending information received from Saint Louis City Department of Health





# QUESTIONS